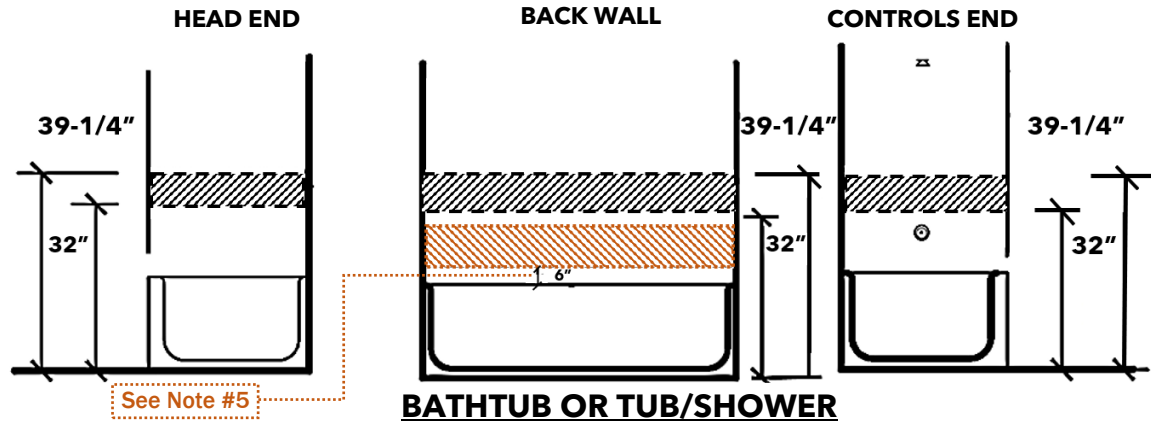
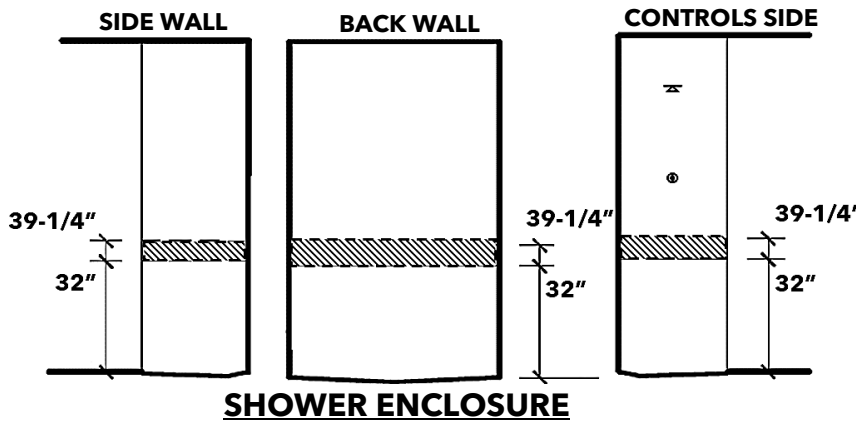
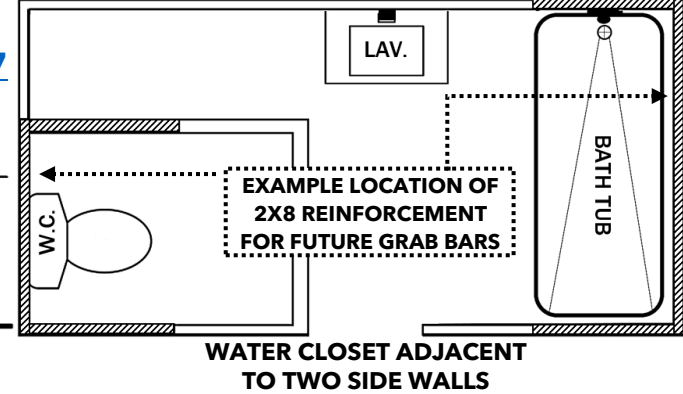
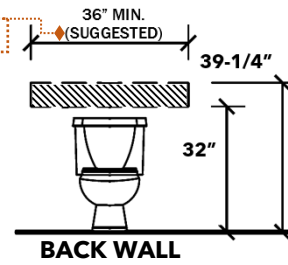
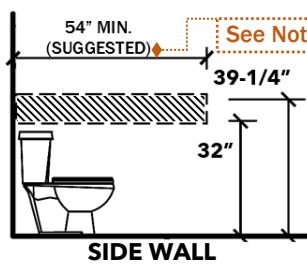
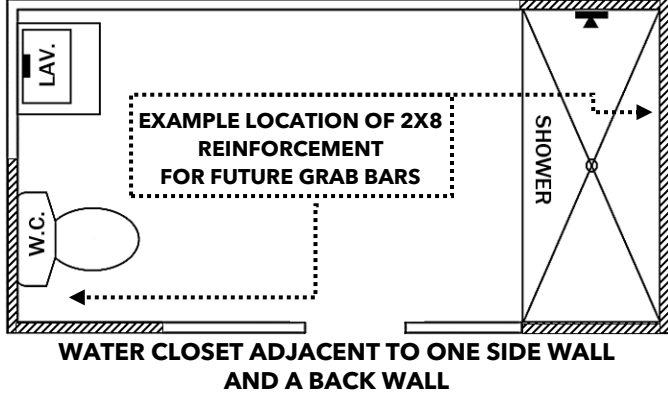


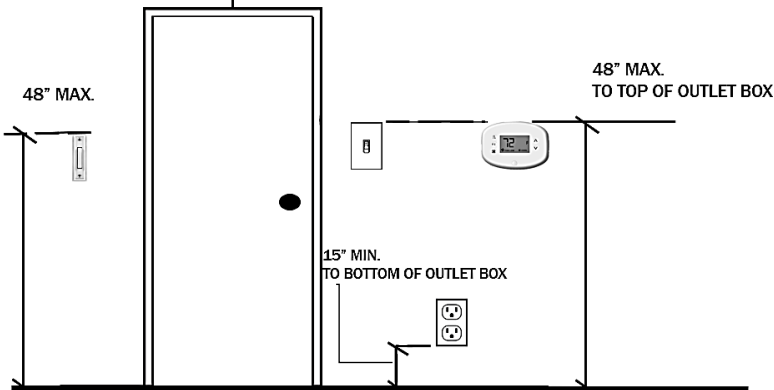
AGING-IN-PLACE DESIGN AND FALL PREVENTION REQUIREMENTS **CRC R327**



EXTERIOR DOORBELL HEIGHT IS FROM FLOOR OR LANDING TO TOP OF DOORBELL ASSEMBLY

INTERIOR HEIGHTS ARE TO FINISH FLOOR

See Exception 4



NOTES:

1. Reinforcement must be located between the dimensions specified.
2. Reinforcement must be continuous in bathtub, bathtub combo and shower wall enclosures, where wall framing is provided.
3. Reinforcement may be solid lumber or other construction materials that provide equal height and load capacity.
4. The location of the reinforcement must be incorporated in the Operation and Maintenance Manual (e.g., floor plan and elevation details) required by [CAL Green Section 4.410.1](#).
5. Additional back wall reinforcement must be installed with the bottom edge no more than 6-inches above the bathtub rim.
6. The suggested dimensions are to accommodate the minimum required 36-inches clearance, center to center, at a water closet; and minimum 24-inches clear space in front of water closet ([CPC 402.5](#)). At this time [CRC R327](#) does not specify the minimum lengths at these locations. However, please consult with the local jurisdiction.

EXCEPTIONS:

1. Reinforcement for future floor-mounted, foldaway or similar alternate grab bar may be installed with prior approvals from the enforcing agency.
2. Wall reinforcement is not required where pre-fabricated shower & bathtub panels that have integral factory-installed grab bars, or when factory-installed reinforcement for grab bars is provided.
3. Reinforcement of floor is not required for bathtubs and water closets installed on concrete floors.
4. Dedicated receptacle outlets; floor receptacle outlets; controls mounted on ceiling fans and ceiling lights and controls located on appliances; and required receptacles on a wall space that has a built-in feature above finish floor less than 15-inches.

EFFECTIVE JULY, 2024 AT LEAST ONE BATHROOM AND ONE BEDROOM ON THE ENTRY LEVEL MUST PROVIDE A DOORWAY WITH A NET CLEAR OPENING OF NOT LESS THAN 32-INCHES MEASURED WITH THE DOOR POSITIONED AT AN 90 DEGREE ANGLE. IN A 2- OR 3- STORY SFD, ON THE SECOND OR THIRD FLOOR IF A BATHROOM OR BEDROOM IS NOT LOCATED ON THE ENTRY LEVEL. [CRC R327.1.3](#)